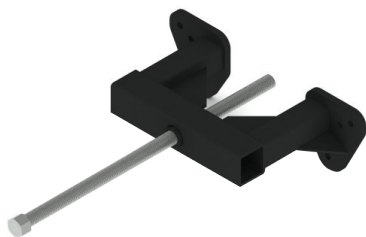
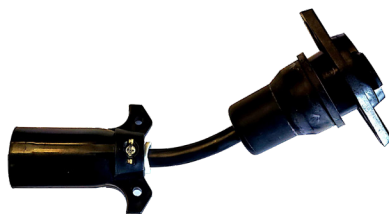


AUGER TOOLS



Auger Tools

AGI offers a range of tools for your operation to assist with the maintenance of your auger. Contact us today to place an order!

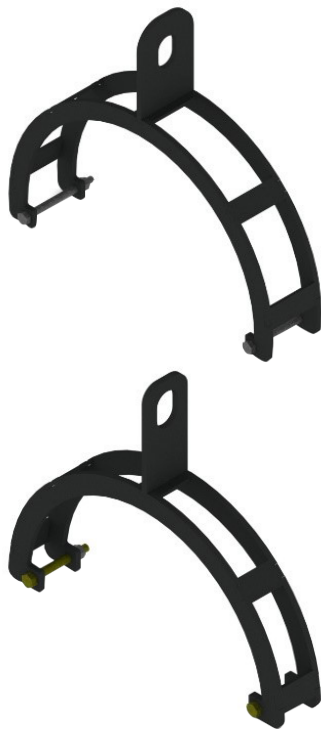
Reducer/Reverser Lifter Kits

B001 - 16"

B002 - 13"

This tool will help you quickly lift our 13" or 16" reducer/reverser gearboxes. Hooks onto the cooling fins on the gearbox and provides a simple loop at the top for hoisting.

(1 pcs)



Gooseneck Hitch Kit

B003

Make towing large augers easier. Simply replace the short tow bar on any 13" or 16" auger and you can tow the auger with better weight distribution on your truck. (1 pcs)



5th Wheel Hitch Kit

B004

Tow your auger with your 5th wheel truck with ease. Simply replace the short tow bar on any 13" or 16" auger and you can tow the auger with your 5th wheel truck. Allows for better weight distribution on your truck. (1 pcs)



Boot Lifter Kit

B005

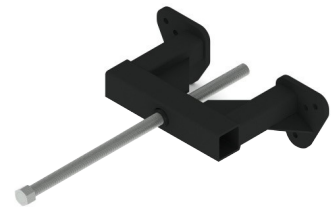
This boot lifter works on your 13" or 16" boots. The adjustable winch bracket makes it easy to balance the boot for easy placement. (1 pcs)



Reducer/Reverser Puller Kit

B006

This puller fits perfectly over your 13" or 16" gearbox making it easy to remove from the auger. This kit comes with an extra puller rod.



Sawhorse Kit

B007

A trick to easy assembling. The scratch-free kit is a perfect combination with the tube cradle kits. The tube cradle kits sit nicely on these sawhorses providing a sturdy foundation.

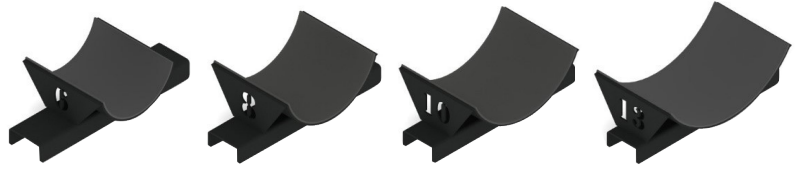
(1 pcs)



Tube Cradle Kit

B008

Available in all auger tube sizes, the tube cradle kit perfectly cradles your auger. Its rubber padded interior keeps your auger tube scratch free. Includes 4 of each 6", 8", 10", 13", and 16" size cradles.



Thrust Adjust Wrench Kit

B009

This wrench has been perfectly fitted to easily tighten your thrust adjuster.

(1 pcs)



Truck Plug Extension Harness

B010

This tool adapts the agricultural 7-pin connector to your automotive 7-pin connector for your auger lights.



Merchandise Rack

B011

This rack is highly versatile and displays parts ranging from small to large. Well-fitted with parts kit # A485. Built durable and powder coat finished to prevent rust. Comes with parts rack and red bins.

*Parts sold separately

*Available in yellow, silver, or red



Tube Repair Kit

B012

This tool makes it easy to fix any dents on an auger tube. This kit is equipped to fix tube sizes of 6", 7", 8", 10", and 13". With the extension arms, you can reach the dent wherever it is on the tube.

*Only available in yellow



Hydraulic Pressure Gauge

B013

Use this gauge to test the pressure your tractor is putting through the hydraulic system.



Dust Cap Driver Tool

B014

This tool is perfectly made to install the dust cap on all open discharge spouts. Applicable for all MKX²/X²/HX² augers.



Thrust Adjust Socket

B015

This socket is the perfect size to tighten the thrust adjust nut. Applicable for all MKX²/X²/HX² augers.





AGI is a leading provider of equipment solutions for agriculture bulk commodities including seed, fertilizer, grain, and feed systems with a growing platform in providing equipment and solutions for food processing facilities. AGI has manufacturing facilities in Canada, the United States, the United Kingdom, Brazil, India and Italy and distributes its products globally.



198 Commerce Drive, Winnipeg, Manitoba, Canada R3P 0Z6
1.855.432.1990

AGGROWTH.COM agrowthintl