

Thermal Steel System



Durable Steel Inside With High Thermal Efficiency

Full Wall Liner

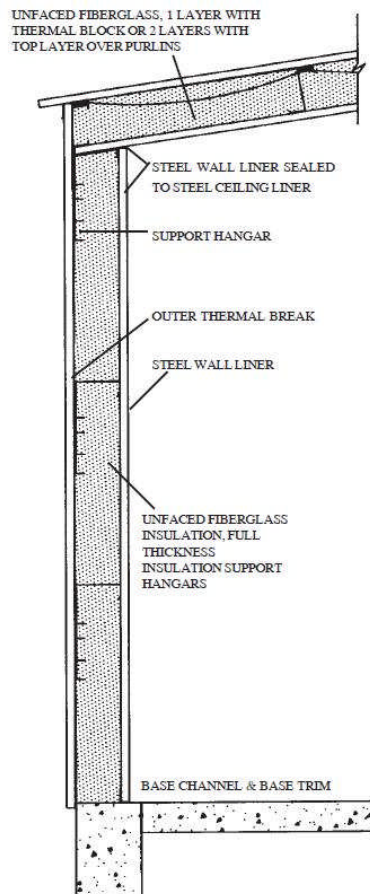
Available in Galvalume or White
29 Gauge or 26 Gauge Steel
Includes:

- Batt Insulation
- Foam Closures Throughout
- Mastic in all laps and joints
- Fasteners with Neoprene Washers

Ceiling Liner

Available in Galvalume or White
29 Gauge or 26 Gauge Steel
Includes:

- Eave Attachment for Wall Liner
- Peak Closure Design
- All Required Fasteners



R-VALUES	
WALL SYSTEM	
TOTAL R	INSULATION THICKNESS (INCHES)
R-10	3
R-11	3 1/2
R-13	4
R-16	5
R-19	6
R-25	8
R-30	9 1/2

R-VALUES		
ROOF SYSTEM		
Total R	Lower Layer (inches)	Upper Layer (inches)
R-19	6	-
R-20	3	3
R-22	3 1/2	3 1/2
R-25	8	-
R-26	5	3
R-26	4	4
R-29	5	4
R-29	6	3
R-30	9 1/2	-
R-30	6	3 1/2
R-32	6	4
R-35	8	3
R-36	8	3 1/2
R-39	8	4
R-40	9 1/2	3
R-43	9 1/2	4